

Johnson Products

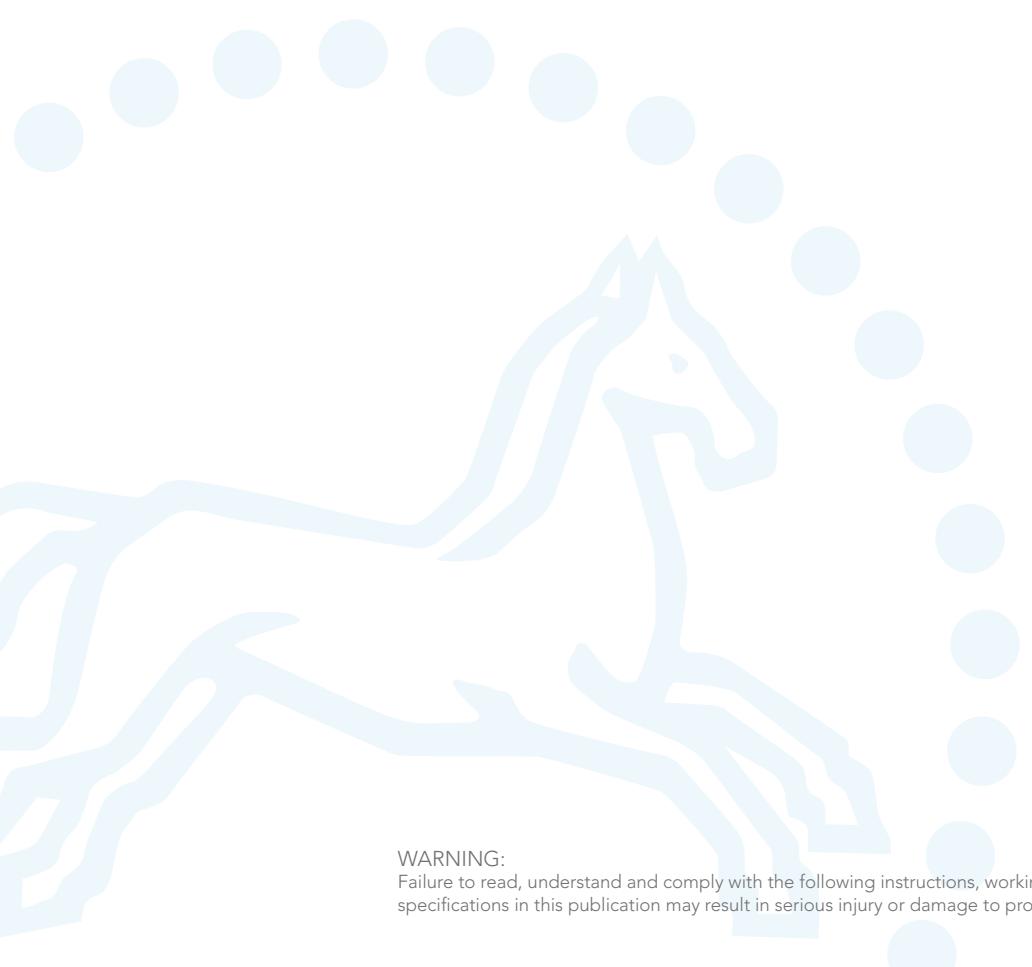
Crane Blocks • Snatch Blocks • Oilfield Blocks • Swivels •
Custom Engineered Products



GUNNEBO
Industries

Johnson Products

Snatch Blocks	6:2 - 6:5
Manhandler Snatch Block	6:5
Derrick Block, Galvanized	6:5
Oilfield Blocks	6:6 - 6:7
Swivels	6:8 - 6:11
Overhaul Balls	6:12
Open Wedge Sockets	6:13
Wire Rope Sheaves	6:14
Quick Reeve, Mobile Crane Block	6:15
Shorty "J" Crane Blocks	6:15
Marine Rigging Blocks	6:15



WARNING:
Failure to read, understand and comply with the following instructions, working load limits and specifications in this publication may result in serious injury or damage to property.

Snatch Blocks

Johnson Snatch Blocks have the convenient side opening feature. This is true even of our heavy duty top dead-end models, and makes it easy to reeve the block without removing any fitting from the end of the wire rope. Other features include choice of swivel hook, shackle, eye fittings or Tailboard Blocks which have no fittings at all.

Standard Features

- Rugged and reliable
- 4:1 design factor
- Easy-open side plates
- Metric rated
- Large hand nuts
- Retainer on latch pin
- Bow shackle with retainer pin
- Bronze bushing

Optional Features

- Proof load
- Roller bearings
- Marine epoxy paint
- Heavy duty J-latch
- Larger sizes
- Customized blocks

Wide Range

Now over 250 models and sizes, from 2 to 30 tonnes. Sheave sizes from 80 to 600 mm in diameter. Multiple rope sizes and end fittings available.

Rugged

Johnson's famous durability is well established in the industry. These blocks stand up to the toughest applications, whether in blistering sun or under icy blizzard conditions.

Reliable

From built-in strength comes the reliability long associated with the Johnson name. These blocks are performers, day after day and year after year. American quality you can count on.

Many Choices

Singles, doubles, top dead end, towing, oilfield, pipe laying and general construction. Sizes and specific models for all.

Convenient

Large, easy to grip hand nuts on all models, especially on the smallest models. Makes it easier to open and close under all conditions without removing gloves, and easy to tap with a hammer to loosen or lock down.

Secondary Securement

All hand nuts and shackles are fitted with "R" pins as a secondary securement device, for example where inspection is limited or infrequent due to location or other factors.



Snatch Block - Tailboard

Single Sheave

4:1 design factor, CE marked



Art.no.	Model	WLL tonnes	Sheave Diameter	Wire Rope Size	Weight kgs
474572012QR3	SB2S3BT	2	3" / 80 mm	Suits 8 - 10 mm wire rope	1.4
474562016QR3	SB4S4BT	4	4" / 100 mm	Suits 10 - 13 mm wire rope	4.5
474621016QR3	SB4S6BT	4	6" / 150 mm	Suits 10 - 13 mm wire rope	5.9
474624016QR3	SB4S8BT	4	8" / 200 mm	Suits 10 - 13 mm wire rope	7.7
474542024QR3	SB8S6BT	8	6" / 150 mm	Suits 16-20 mm wire rope	7.2
474369024QR3	SB8S8BT	8	8" / 200 mm	Suits 16-20 mm wire rope	11.3
474375024QR3	SB8S10BT	8	10" / 250 mm	Suits 16-20 mm wire rope	14.1
474381024QR3	SB8S12BT	8	12" / 300 mm	Suits 16-20 mm wire rope	15.4
474410028QR3	SB12S6BT	12	6" / 150 mm	Suits 20 - 22 mm wire rope	12.7
474416028QR3	SB12S8BT	12	8" / 200 mm	Suits 20 - 22 mm wire rope	19
474422028QR3	SB12S10BT	12	10" / 250 mm	Suits 20 - 22 mm wire rope	24.5
474733036QR3	SB20S8BT	20	8" / 200 mm	Suits 26 - 29 mm wire rope	20.9
474734036QR3	SB20S10BT	20	10" / 250 mm	Suits 26 - 29 mm wire rope	29.5

Snatch Block with Shackle

Single Sheave

4:1 design factor, CE marked



Art.no.	Model	WLL tonnes	Sheave diameter	Wire Rope Size	Weight kgs
474602012QR3	SB2S3BS	2	3" / 80 mm	Suits 8 - 10 mm wire rope	2.3
474603016QR3	SB4S4BS	4	4" / 100 mm	Suits 10 - 13 mm wire rope	7.7
474620016QR3	SB4S6BS	4	6" / 150 mm	Suits 10 - 13 mm wire rope	9.0
474623016QR3	SB4S8BS	4	8" / 200 mm	Suits 10 - 13 mm wire rope	10.8
474644016QR3	SB4S10BS	4	10" / 250 mm	Suits 10 - 13 mm wire rope	15.0
474365024QR3	SB8S6BS	8	6" / 150 mm	Suits 16 - 19 mm wire rope	12.7
474371024QR3	SB8S8BS	8	8" / 200 mm	Suits 16 - 19 mm wire rope	16.8
474377024QR3	SB8S10BS	8	10" / 250 mm	Suits 16 - 19 mm wire rope	19.5
474587024QR3	SB8S12BS	8	12" / 300 mm	Suits 16 - 19 mm wire rope	24.5
474412028QR3	SB12S6BS	12	6" / 150 mm	Suits 20 - 22 mm wire rope	22.7
474418028QR3	SB12S8BS	12	8" / 200 mm	Suits 20 - 22 mm wire rope	29.0
474424028QR3	SB12S10BS	12	10" / 250 mm	Suits 20 - 22 mm wire rope	34.5
474582028QR3	SB12S12BS	12	12" / 300 mm	Suits 20 - 22 mm wire rope	41.7
474436028QR3	SB12S14BS	12	14" / 350 mm	Suits 20 - 22 mm wire rope	49.9
474455028QR3	SB15S8BS	15	8" / 200 mm	Suits 20 - 22 mm wire rope	29.0
474461028QR3	SB15S10BS	15	10" / 250 mm	Suits 20 - 22 mm wire rope	35.4
474647036QR3	SB20S8BS	20	8" / 200 mm	Suits 26 - 29 mm wire rope	43.1
474728036QR3	SB20S10BS	20	10" / 250 mm	Suits 26 - 29 mm wire rope	51.7
474729036QR3	SB20S12BS	20	12" / 300 mm	Suits 26 - 29 mm wire rope	53.0
474730036QR3	SB20S14BS	20	14" / 350 mm	Suits 26 - 29 mm wire rope	58.0
474731036QR3	SB20S16BS	20	16" / 400 mm	Suits 26 - 29 mm wire rope	73.0
474740040QR3	SB30S20BS	30	20" / 500 mm	Suits 29 - 32 mm wire rope	135.2



Snatch Block with Hook

Single Sheave

4:1 design factor, CE marked



Art.no.	Model	WLL tonnes	Sheave diameter	Wire Rope Size	Weight kgs
475092012QR3	SB2S3BH	2	3" / 80 mm	Suits 8 - 10 mm wire rope	2.3
475090016QR3	SB4S6BH	4	6" / 150 mm	Suits 10 - 13 mm wire rope	8.6
475093016QR3	SB4S8BH	4	8" / 200 mm	Suits 10 - 13 mm wire rope	10.0
474655016QR3	SB4S4BH	4	4" / 100 mm	Suits 10 - 13 mm wire rope	7.3
474601024QR3	SB8S8BH	8	8" / 200 mm	Suits 16 - 19 mm wire rope	15.9
475104024QR3	SB8S10BH	8	10" / 250 mm	Suits 16 - 19 mm wire rope	19.0
474583024QR3	SB8S12BH	8	12" / 300 mm	Suits 16 - 19 mm wire rope	24.0
475109028QR3	SB12S6BH	12	6" / 150 mm	Suits 20 - 22 mm wire rope	20.9
474577028QR3	SB12S8BH	12	8" / 200 mm	Suits 20 - 22 mm wire rope	27.2
474594028QR3	SB12S10BH	12	10" / 250 mm	Suits 20 - 22 mm wire rope	32.6
474581028QR3	SB12S12BH	12	12" / 300 mm	Suits 20 - 22 mm wire rope	39.9
475119028QR3	SB15S8BH	15	8" / 200 mm	Suits 20 - 22 mm wire rope	29.9
475121028QR3	SB15S10BH	15	10" / 250 mm	Suits 20 - 22 mm wire rope	36.3
475123028QR3	SB15S12BH	15	12" / 300 mm	Suits 20 - 22 mm wire rope	44.0
475129036QR3	SB20S8BH	20	8" / 200 mm	Suits 26 - 29 mm wire rope	36.7
475131036QR3	SB20S10BH	20	10" / 250 mm	Suits 26 - 29 mm wire rope	45.3
475133036QR3	SB20S12BH	20	12" / 300 mm	Suits 26 - 29 mm wire rope	46.7



Snatch Block with Shackle

Double Sheave

4:1 design factor



Art.no.	Model	WLL tonnes	Sheave diameter	Wire Rope Size	Weight kgs
474774016	DB8S4BS	8	4" / 100 mm	Suits 10 - 13 mm wire rope	13.6
474781024	DB12D6BS	12	6" / 150 mm	Suits 16 - 19 mm wire rope	24.5
474792028	DB15D8BS	15	8" / 200 mm	Suits 20 - 22 mm wire rope	32.2
474801036	DB20D10BS	20	10" / 250 mm	Suits 26 - 29 mm wire rope	65.3



Top Deadend Snatch Block with Hook

Single Sheave

4:1 design factor

Art.no.	Model	WLL tonnes	Sheave diameter	Wire Rope Size	Weight kgs
475261028	TD12S10BH W/ LATCH	12	10" / 250 mm	Suits 19 - 22 mm wire rope	34.0



Top Deadend Snatch Block with Shackle

Single Sheave

4:1 design factor

Art.no.	Model	WLL tonnes	Sheave diameter	Wire Rope Size	Weight kgs
474756024	TD8S8BS	8	8" / 200 mm	Suits 16 - 19 mm wire rope	18.1
474767028	TD12S10BS	12	10" / 250 mm	Suits 19 - 22 mm wire rope	35.8

Manhandler Snatch Block

12:1 design factor, CE marked

Johnson's Manhandler Snatch Blocks (MHSB) are suitable for personnel hoisting when properly incorporated into a compliant personnel hoist system and maintained in good working order.

See the Manhandler Warnings and Use Limitations Brochure available from Gunnebo Industries and your distributor.

- Standard painted finish
- For lifting personnel
- Sealed roller bearings
- Interlocking internal design
- R-pins retainers
- Secondary tether attachment points



Art. no	Model	WLL kgs	Wire rope mm	Sheave diameter mm	Weight kgs
687431014	MHSB1S8RS	680	10 - 11	200	10.4

Galvanized Derrick Block

4:1 design factor

- 4 - 12 tonnes WLL
- Standard galvanized finish
- Handling slots in the body
- Large knock-off handles
- Interlocking internal design
- For lifting materials
- R-Pin retainers

Art. no	Model	WLL tonnes	Wire rope mm	Sheave diameter mm	Weight kgs
687710016	MHSB4S8TS	4	10 - 13	200	15
687334018	MHSB12S10TS	12	13 - 14	250	39.9
687853024	MHSB12S14T S	12	16 -19	355	58.0



Oilfield Blocks

We have produced Johnson oilfield equipment for over five decades. Because of our expertise in sheaves and blocks, Gunnebo Industries has become a respected manufacturer for the Petroleum industry. We know the needs and we have the know-how to fulfil them with quality lifting devices. High capacity, custom engineered oilfield blocks available upon request.



Laydown Block

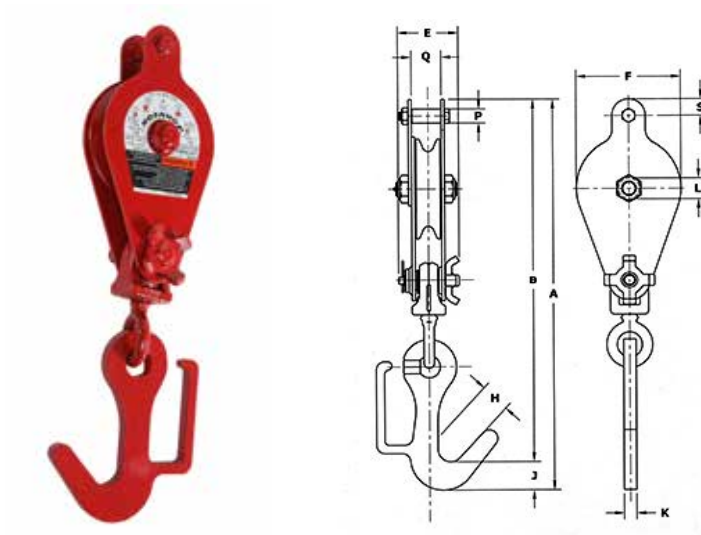
Tong Line Block

Hayfork Pulley

Guy Line Block

Laydown Block, 1 ton

4:1 design factor



Key to Laydown Block Model Numbers:

- LD – Laydown Block
- 1 – Working Load Limit
- S – Number of sheaves: S = 1
- 6 – Sheave diameter (In inches)
- B – Sheave Bearing: B = Bronze Bushed
- H – Type of fitting: H = Hook

To order please specify the model number

Art.no.	Model No.	Weight kgs	A Overall Length	B Net Length	E Total Thickness	F Width	H Throat Opening	J Hook Thickness	K Hook Width	L Center Pin Dia.	P Pin Dia. Max	Q Width Between Ears Min	S Pin to End of Fitting Max
474812020	LD1S6BH	9.5	598.7	555.0	92.2	159.0	76.2	43.7	19.1	25.4	21.3	44.7	26.9

Tong Line Block

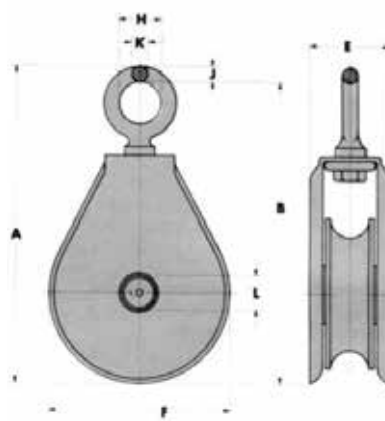
4:1 design factor

Art.no.	Model	WLL tonnes	Sheave diameter	Wire Rope Size	Weight kgs
474805020	TL2.8S6RE	2.8	6" / 150 mm	Suits 13 - 16 mm wire rope	6.8
474807020	TL2.8S8RE	2.8	8" / 200 mm	Suits 13 - 16 mm wire rope	9.1



Hay Fork Pully, 1 ton

3.3:1 design factor



Key to Hay Fork Pully Model Numbers:

- HF - Hay Fork Pulley
- 1 - Working Load Limit (U.S. Tons)
- S - Number of sheaves: S = 1
- 4 - Sheave Diameter
- B - Sheave bearing: B = Bronze Bushed | R = Roller Bearing
- E - Type of Fitting: E = Eye | H = Hook
- MR - Rope Size: MR = 32mm Manilla Rope | WR = 13 mm Wire Rope

To order please specify the model number

Art.no.	Model No.	Manilla/Wire Rope	A Overall Length	B Net Length	E Total Thickness	F Width	H Throat Opening	J Eye Thickness	K Eye Width	L Center Pin Dia.	Weight kgs
453865040	HF1S-4BE-MR	32	228.6	217.5	60.3	130.2	22.2	11.1	11.1	25.4	3.2
453866016	HF1S-4BE-WR	32	228.6	217.5	60.3	130.2	22.2	11.1	11.1	25.4	3.2
453869040	HF1S-4RE-MR	13	228.6	217.5	60.3	130.2	22.2	11.1	11.1	25.4	3.2
453870016	HF1S-4RE-WR	13	228.6	217.5	60.3	130.2	22.2	11.1	11.1	25.4	3.2

6

Guyline Block

3:1 design factor

Art.no.	Model	WLL tonnes	Sheave diameter	Wire Rope Size	Weight kgs
475541020	GL 15D6	15	6" / 150 mm	Suits 16 mm wire rope	19.1
475540020	GL 7.5S 6	7.5	6" / 150 mm	Suits 16 mm wire rope	11.3



Swivels

Our Johnson thrust bearing swivels are widely used for the primary purpose of allowing the natural twist in wire rope to rotate as necessary without affecting the suspended load. Standard swivels are available in six different end fitting combinations, from 3 to 30 tonnes WLL.

Simple and compact, the swivels are engineered for long life and economical cost. Hooks are forged alloy steel, lubrication fittings are recessed, and a generous bronze bushing assures toughness and long life.



Standard Equipment

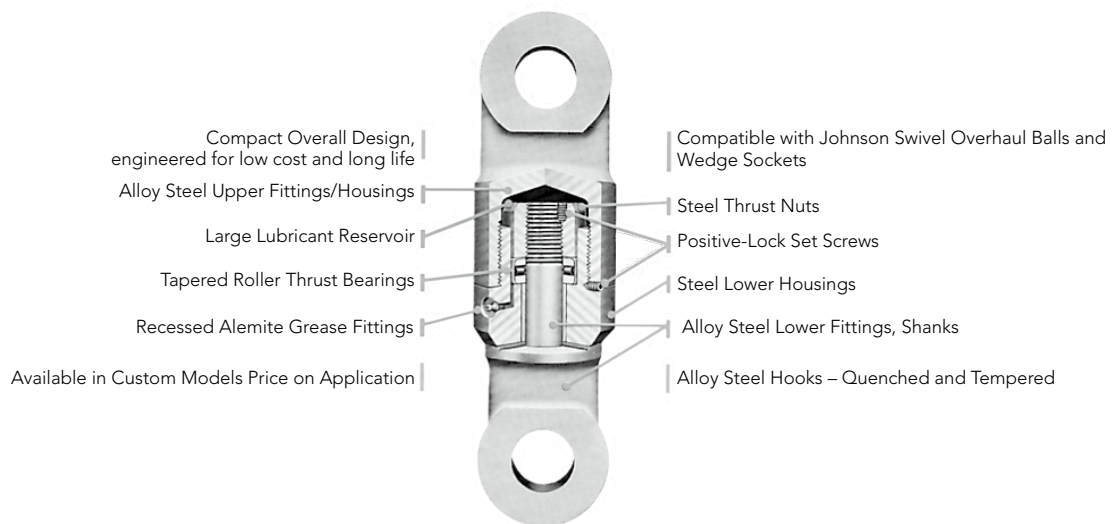
- Forged hook with latch
- Roller thrust bearing
- Large bronze thrust bushing
- Recessed lubrication fitting
- Large lubricant reservoir
- Proof load test

Optional Equipment

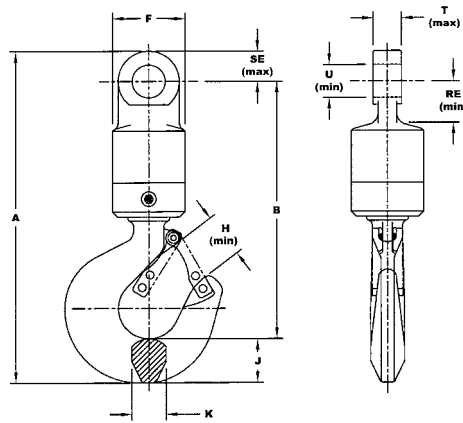
- Custom end fitting sizes
- Custom sizes above 30 tonnes WLL
- Anti-corrosion coatings



The Simple and Compact Design of a Johnson Swivel



Swivel Eye/Hook, 3 - 30 tonnes



Key to Eye/Hook Swivel Model Numbers:

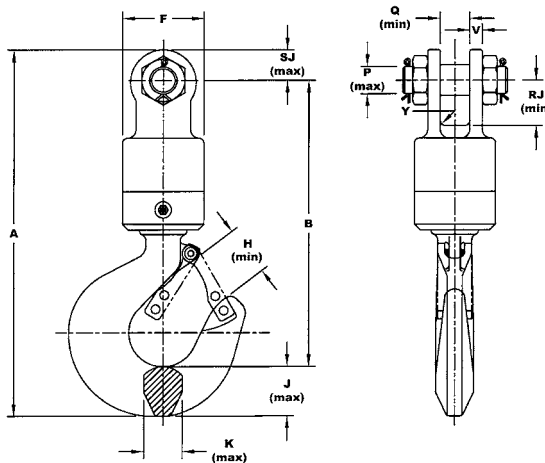
- 3 - Working Load Limit (tonnes)
- E - Top Fitting (E = Eye)
- H - Bottom Fitting (H = Hook)
- M - Midget Swivel

To order please specify the model number.



Art.no.	Model No.	WLL tonnes	A Overall Length	B Net Length	F Swivel Dia.	H Throat Opening with Latch	J Hook Thickness	K Hook Width	RE Hole to Obstruction Min	SE Hole to End of Fitting Max	T Thickness of Eye Max	U Hole Dia. Min	Weight kgs	Design Factor
471266	3EHM	3.0	268.7	200.9	66.8	28.4	37.6	28.4	31.2	31.0	23.1	26.2	3.5	5
471268	3EH	3.0	341.9	272.5	82.5	28.4	37.6	28.4	39.5	34.0	26.2	33.3	6.8	5
471270	5EH	5.0	350.3	280.9	82.5	28.4	37.6	28.4	39.4	34.0	26.2	33.0	6.8	4
471272	7EH	7.0	376.4	298.7	82.5	35.3	46.0	35.0	39.4	34.0	26.2	33.3	7.3	4
471274	9EH	9.0	471.4	356.4	101.6	48.5	64.3	49.0	56.9	51.6	32.5	45.2	15.4	4
471276	12EH	12.0	479.8	364.7	112.8	48.5	64.3	49.0	61.8	51.6	32.5	45.2	17.7	4
471278	15EH	15.0	479.8	364.7	112.8	48.5	64.3	49.0	61.8	51.6	32.5	45.2	17.7	4
471280	20EH	20.0	579.9	443.2	133.4	71.1	76.2	60.5	70.6	63.6	42.2	53.3	31.3	4
471281	25EH	25.0	629.4	480.1	133.3	83.3	88.9	76.2	70.6	63.6	42.2	53.3	41.0	5
471282	30EH	30.0	673.9	515.1	165.1	83.3	88.9	76.2	70.9	73.2	41.4	58.9	53.0	4

Swivel Jaw/Hook, 3 - 15 tonnes



Key to Jaw/Hook Swivel Model Numbers:

- 3 - Working Load Limit (tonnes)
- J - Top Fitting (J = Jaw)
- H - Bottom Fitting (H = Hook)
- M - Midget Swivel

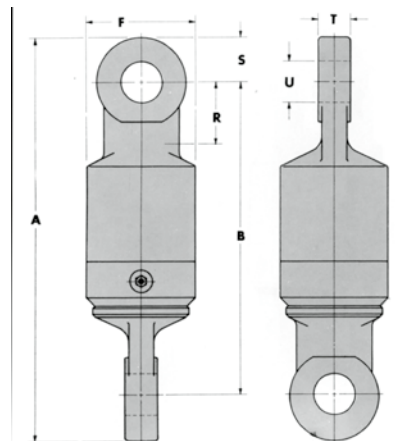
To order please specify the model number.



Art.no.	Model No.	WLL tonnes	A Overall Length	B Net Length	F Swivel Dia.	H Throat Opening with Latch	J Hook Thickness	K Hook Width	P Pin Dia. Max	Q Width Between Ears Min	RJ Pin to Obstruction Min	SJ Pin to End of Fitting Max	V Thickness of Ear	Y Jaw Radius	Weight kgs	Design Factor
471267	3JHM	3.0	267.2	200.9	66.8	28.4	37.6	28.4	25.4	24.6	27.4	30.9	12.7	2.3	3.9	5
471269	3JH	3.0	348.2	275.6	82.5	28.4	37.6	28.4	31.8	36.6	52.5	36.4	14.2	6.4	8.2	5
471271	5JH	5.0	356.6	284.0	82.5	28.4	37.6	28.4	31.8	36.6	52.5	36.4	14.2	6.4	8.6	4
471273	7JH	6.4	382.8	301.9	82.5	35.3	46.0	35.1	31.8	36.6	52.5	36.4	14.2	6.4	9.0	4
471275	9JH	9.0	473.0	357.9	101.6	48.5	64.3	49.0	44.5	42.9	68.3	52.3	19.1	6.4	18.1	5
471277	12JH	12.0	486.2	371.1	112.7	48.5	64.3	49.0	44.5	49.3	74.7	52.3	19.1	6.4	20.4	4
471279	15JH	15.0	486.2	371.1	112.7	48.5	64.3	49.0	44.5	49.3	74.7	52.3	19.1	6.4	20.4	4

Swivel Eye/Eye, 3 - 30 tonnes

5:1 design factor, CE marked



Key to Eye/Eye Swivel Model Numbers:

- 3 - Working Load Limit (tonnes)
- E - Top Fitting (E = Eye)
- E - Bottom Fitting (E = Eye)
- M - Midget Swivel

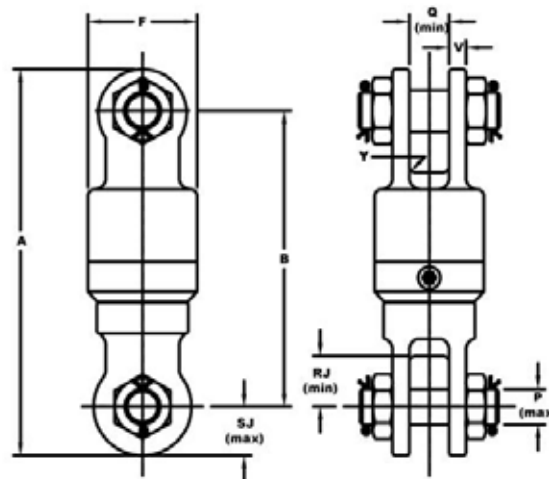
To order please specify the model number.



Art.no.	Model No.	WLL tonnes	A Overall Length	B Net Length	F Swivel Dia.	R Hole to Obstruction Min	S Hole to End of Fitting Max	T Thickness of Eye Max	U Hole Dia. Min	Weight kgs
471430	3EEM	3.0	204.0	143.5	66.8	31.8	31.8	23.1	26.2	2.7
471769	4EE	4.0	305.6	240.5	82.5	39.4	34.0	26.2	33.3	6.3
471434	7EE	7.0	302.3	237.2	82.5	39.4	34.0	26.2	33.3	6.2
471438	12EE	12.0	388.4	286.8	101.6	61.5	51.6	32.5	45.2	12.0
471442	19EE	19.0	403.9	302.3	112.8	62.7	51.6	32.5	45.2	14.3
471446	25EE	25.0	449.6	328.9	133.3	70.9	61.2	42.2	53.3	22.8
471447	30EE	30.0	513.3	373.6	165.1	66.0	70.6	41.4	58.7	38.5

Swivel Jaw/Jaw, 3 - 19 tonnes

5:1 design factor, CE marked



Key to Jaw/Jaw Swivel Model Numbers:

- 3 - Working Load Limit (tonnes)
- J - Top Fitting (J = Jaw)
- J - Bottom Fitting (J = Jaw)
- M - Midget Swivel.

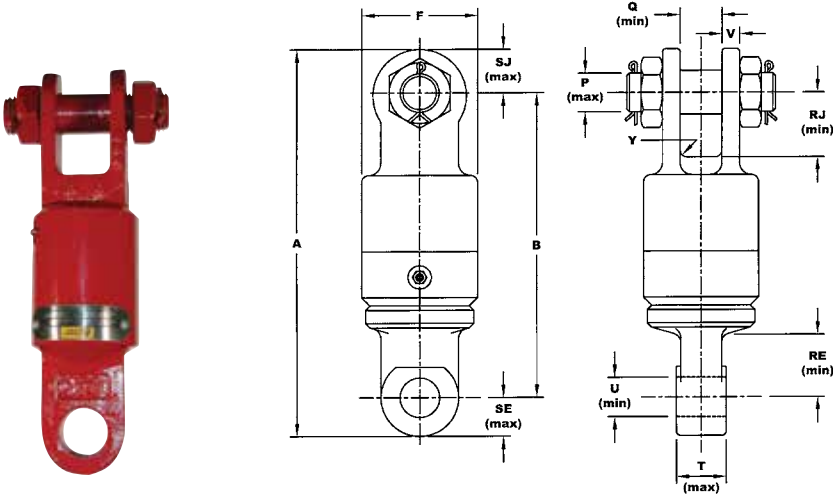
To order please specify the model number.



Art.no.	Model No.	WLL tonnes	A Overall Length	B Net Length	F Swivel Dia.	P Pin Dia. Max	Q Width Between Ears Min	R Pin to Obstruction Min	S Pin to End of Fitting Max	V Thickness of Ear	Y Jaw Radius	Weight kgs
471433	3JJM	3.00	208.5	149.6	66.8	25.4	24.6	33.5	31.8	12.7	2.3	3.8
471772	4JJ	4.00	317.0	246.6	82.5	31.7	36.6	52.6	36.6	14.2	6.3	9.9
471437	7JJ	7.00	317.0	246.6	82.5	31.7	36.6	52.6	36.6	14.2	6.3	9.9
471441	12JJ	12.00	396.5	294.9	101.6	44.4	42.9	68.3	52.3	19.0	6.3	19.1
471445	19JJ	19.00	422.6	321.0	112.8	44.4	49.3	74.7	52.3	19.0	6.3	21.5

Swivel Jaw/Eye, 3 - 19 tonnes

5:1 design factor, CE marked



Key to Jaw/Eye Swivel Model Numbers:

- 3 - Working Load Limit (tonnes)
- J - Top Fitting (J = Jaw)
- E - Bottom Fitting (E = Eye)
- M - Midget Swivel

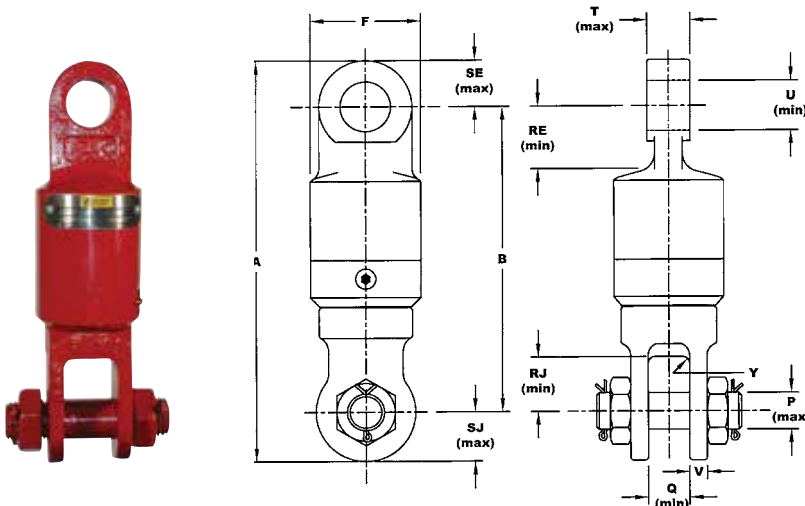
To order please specify the model number.



Art.no.	Model No.	WLL tonnes	A Overall Length	B Net Length	F Swivel Dia.	P Pin Dia. Max.	Q Width Between Ears Min.	RE Hole to Obstruction Min.	RJ Pin to Obstruction Min.	SE Hole to End of Fitting Max.	SJ Pin to End of Fitting Max.	T Thickness of Eye Max.	U Hole Dia. of Fitting Min.	V Thickness of Ear	Y Jaw Radius	Weight kgs
471432	3JEM	3.0	202.2	143.5	66.8	25.4	23.9	33.5	33.5	31.8	30.9	23.6	26.2	12.7	2.3	3.2
471771	4JE	4.0	308.6	240.0	82.5	31.8	36.6	39.4	52.6	35.6	34.8	23.8	33.3	14.2	6.4	7.7
471436	7JE	7.0	311.9	241.3	82.5	31.8	36.6	39.4	53.9	34.8	35.1	25.4	31.8	14.2	6.4	7.7
471440	12JE	12.0	394.7	293.1	101.6	44.5	43.7	61.7	69.1	51.6	51.6	32.5	45.2	19.1	6.4	15.0
471444	19JE	19.0	403.9	302.3	112.8	44.5	50.0	61.7	75.4	51.6	51.6	32.5	45.2	19.1	6.4	17.2

Swivel Eye/Jaw, 3 - 19 tonnes

5:1 design factor, CE marked



Key to Eye/Jaw Swivel Model Numbers:

- 3 - Working Load Limit (tonnes)
- E - Top Fitting (E = Eye)
- J - Bottom Fitting (J = Jaw)
- M - Midget Swivel

To order please specify the model number.



Art.no.	Model No.	WLL tonnes	A Overall Length	B Net Length	F Swivel Dia.	P Pin Dia. Max.	Q Width Between Ears Min.	RE Hole to Obstruction Min.	RJ Pin to Obstruction Min.	SE Hole to End of Fitting Max.	SJ Pin to End of Fitting Max.	T Thickness of Eye Max.	U Hole Dia. of Fitting Min.	V Thickness of Ear	Y Jaw Radius	Weight kgs
471431	3EJM	3.0	210.0	149.9	66.8	25.4	24.6	31.8	34.3	31.0	31.0	23.1	26.2	12.7	2.3	3.3
471770	4EJ	4.0	310.6	243.6	82.5	31.7	36.6	41.4	52.6	32.5	36.6	26.2	33.3	14.2	6.3	8.2
471435	7EJ	7.0	310.6	243.6	82.5	31.7	36.6	41.4	52.6	32.5	36.6	26.2	33.3	14.2	6.3	8.2
471439	12EJ	12.0	396.5	294.9	101.6	44.4	42.9	64.3	68.3	51.6	52.3	32.5	45.2	19.0	6.3	15.9
471443	19EJ	19.0	416.3	314.7	112.8	44.4	49.2	62.0	74.7	51.6	52.3	32.5	45.2	19.0	6.3	19.1

Overhaul Balls

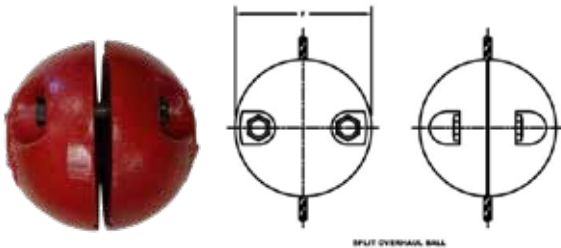
Provide the overhaul weight necessary to counter bearing friction and winch-to-boom-tip line weight. Because these units must meet a wide range of field applications, we offer an equally wide range of unit sizes. It is in fact, one of the widest ranges available. Over 240 models; 2.7 - 22.7 tonnes WLL. Non-swivel balls are also available.

Standard Features

- 2.7 to 22.7 tonnes
- 4:1 design factor
- Heavy duty J-Latch standard

Optional Features

- High capacity, custom engineered balls available upon request.



Split Overhaul Ball

Art.no.	Model No.	Weight kgs	Wire Rope Size	F Ball Dia.
452245	OB 50 SPLIT	22.7	Suits 13 - 22 mm wire rope	184.1
452179	OB 100 SPLIT	45.4	Suits 16-22 mm wire rope	9.25

Top Swivel Overhaul Ball 2.7 - 22.7 tonnes

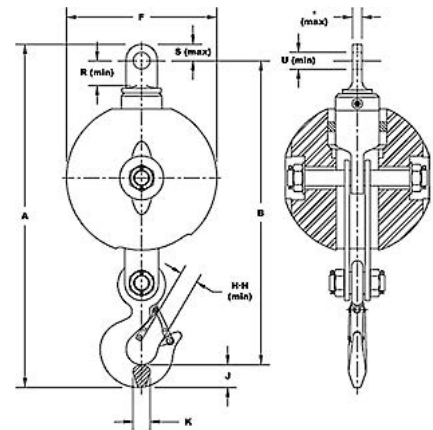
4:1 design factor



Key to Top Swivel Overhaul Ball Model Numbers:

OB - Overhaul Ball
 4EE - Swivel Model
 85 - Ball Weight (In pounds)
 4 - Type

To order please specify the model number.



Art. no.	Model No.	WLL tonnes	Weight of Assembly kgs	A Overall Length	B Net Length	F Ball Dia.	H Throat Opening	J Hook Thickness	K Hook Width	R Pin to Obstruction	S Pin to End of Fitting	T Thickness of Eye	U Hole Dia.
471995	OB3JEM28-4	2.7	17.2	341.9	270.5	201.7	27.9	36.6	28.4	31.2	31.0	23.1	27.7
471538	OB4EE35-4	3.6	26.8	599.1	509.5	190.5	27.9	36.6	28.4	39.3	34.0	26.2	34.0
471539	OB7EE35-4	6.4	28.6	622.3	544.6	190.5	35.1	46.0	37.1	39.3	34.0	26.2	34.0
471541	OB7EE85-4	6.4	46.3	624.6	544.6	241.3	35.1	46.0	37.1	39.3	34.0	26.2	34.0
471545	OB7EE150-4	6.4	77.6	692.2	612.1	285.8	35.1	46.0	37.1	39.3	34.0	26.2	34.0
471550	OB12EE200-4	10.9	112.5	864.4	747.0	304.8	46.2	65.8	49.3	56.9	51.6	32.5	45.2
471861	OB12EE285-4	10.9	163.3	864.4	747.0	352.6	46.2	65.8	49.3	56.9	51.6	32.5	46.0
471552	OB12EE350-4	10.9	183.3	864.4	747.0	368.3	46.2	65.8	49.3	56.9	51.6	32.5	46.0
473734	OB19EE350-4	17.2	197.3	952.8	825.0	368.3	71.1	76.2	60.5	61.7	51.6	32.5	46.0
473735	OB19EE650-4	17.2	332.5	1003.6	875.8	455.7	71.1	76.2	60.5	61.7	51.6	32.5	46.0
473738	OB25EE650-4	22.7	346.5	1042.4	902.7	455.7	71.1	76.2	60.5	70.6	63.8	42.2	53.3
473739	OB25EE1150-4	22.7	568.4	1042.4	902.7	549.4	71.1	76.2	60.5	70.6	63.8	42.2	53.3

Open Wedge Sockets

Open Wedge Sockets combine positive attachment with optimum versatility. Easy-to-change Johnson Wedge Sockets are a high strength cast alloy steel with Charpy value of 34 Joules at -20 °C. Each socket accepts at least two different ductile iron wedges. This allows the socket to be used with more than one rope size. Together, wedge and body act as a vise which grips the wire rope and locks it into place. The headed attachment pin is standard and has a Charpy value of 34 Joules at -20°C.

Key to Open Wedge Socket Model Numbers:

WS - Wedge Socket

FS - Federal Specification

6 - Body Number

3/4" - Wire Rope Wedge Size



To order please specify the model number.

Open Wedge Socket 9.5 mm to 38 mm

4:1 design factor

Art.no.	Model No.	Wire Rope mm	Weight kgs	A Overall Length	B Net Length	E Total Thickness	P Pin Dia.	Q Width Between Ears Min	R Pin to End of Fitting	S Pin to End of Fitting	V Thickness of Ear
472371	WS-4 3/8"	10	1.5	165.1	136.7	65.5	25.9	23.9	30.5	28.7	11.2
472372	WS-4 7/16"	11	1.5	165.1	136.7	65.5	25.9	23.9	30.5	28.7	11.2
472373	WS-4 1/2"	13	1.5	165.1	136.7	65.5	25.9	23.9	30.5	28.7	11.2
472374	WS-5 1/2"	13	4.0	221.5	184.2	90.2	32.3	35.1	45.7	37.3	16.5
472375	WS-5 9/16"	14	4.0	221.5	184.2	90.2	32.3	35.1	50.8	37.3	16.5
472376	WS-5 5/8"	16	4.0	221.5	184.2	90.2	32.3	35.1	50.8	37.3	16.5
472377	WS-6 5/8"	16	4.2	223.8	185.7	90.2	32.3	38.1	48.3	38.1	15.7
472378	WS-8A 5/8"	16	7.3	286.0	231.9	106.2	41.9	42.9	66.0	54.1	12.7
472379	WS-6 3/4"	19	4.2	223.8	185.7	90.2	32.3	38.1	35.6	38.1	15.7
472380	WS-8A 3/4"	19	7.3	286.0	231.9	106.2	41.9	42.9	61.0	54.1	12.7
472381	WS-7 7/8"	22	7.3	282.7	241.3	90.2	32.3	33.3	58.4	41.4	17.5
472382	WS-8 7/8"	22	8.2	289.1	241.3	106.2	41.9	42.9	53.3	47.8	20.6
472383	WS-7 1"	26	7.3	282.7	241.3	90.2	32.3	33.3	63.5	41.4	17.5
472384	WS-8 1"	26	8.2	289.1	241.3	106.2	41.9	42.9	55.9	47.8	20.6
472385	WS-10 1 1/8"	28	20.9	392.2	336.6	106.2	41.9	44.5	78.7	55.6	20.6
472386	WS-11 1 1/8"	28	24.5	406.4	342.9	131.8	64.0	62.0	111.8	63.5	22.1
472387	WS-10 1 1/4"	32	20.9	392.2	336.6	106.2	41.9	44.5	78.7	55.6	20.6
472388	WS-11 1 1/4"	32	24.5	406.4	342.9	131.8	64.0	62.0	109.2	63.5	22.1
474271	FS-26 1 3/8"	35	43.1	466.9	381.0	161.5	76.7	66.8	106.7	85.9	33.3
472389	FS-26 1 1/2"	38	43.1	466.9	381.0	161.5	76.7	66.8	106.7	85.9	33.3

Provides a termination efficiency 80%, based on the catalog minimum breaking force of 6x19, 6x25, and 6x36, IWRC wire rope.

Wire Rope Sheaves

Johnson Sheaves are highly trusted and popular, in its own right and as the original equipment preferred by several of the main rig and crane manufacturers. Johnson Sheaves can be divided and described in the following categories:

- Conventional cast steel and ductile iron sheaves, which range in size from 3 to 14 inches in O.D.
- Revolutionary ForgeFab[®] – a superior strength line of wire rope sheaves which can be supplied without long delays. The ForgeFab[®] sheaves will add value through increased product life, for the sheave as well as the wire rope, and gives the user the advantage of flexibility in field.



Standard features

- 80 - 2740 mm sheave diameters
- 6 - 80 mm wire rope sizes
- Cast iron, ductile iron, cast steel, ForgeFab[®] steel types.

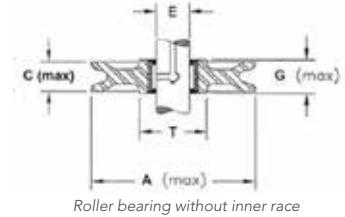
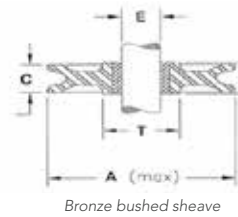
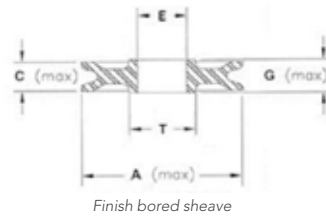
Optional features

- Custom designs to customer shaft, bearing mounting, hub, sheave O.D. or wire rope size requirement.
- Electroplate inorganic zinc compound and other corrosion resistant coatings available.
- Hub-located grease fittings
- Modifications as required to API and other applicable industry standards.
- Special shaft, furnished for any sheave listed.
- AISE No. 6 specifications.
- Cold weather properties.

Information Needed for Quotation

Dimensional Information

- Wire line diameter
- Sheave outside diameter (A)
- Bore size, if plain or finished bore (E)
- Hub width (G)
- Hub outside diameter (T)
- Shaft size with bearing (E)
- Rim width (C)
- Tread diameter



Bearing Options

- Finish/Plain bore
- Bronzed bushing
- Roller bearing
- Tapered roller bearing
- Ball bearing
- Full complement cylindrical roller bearing

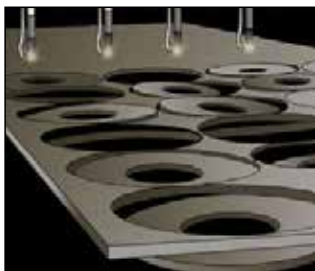
Type of Application

- Description
- Line load
- Line speed
- Degree of wrap
- Fleet angle
- Weight restrictions

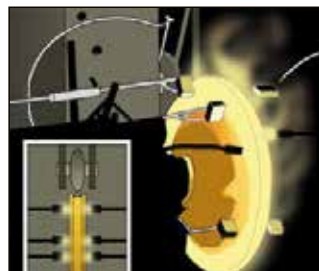
Are there other Requirements?

- Flame hardened groove (Standard on 16" or larger.)
- Hardness level
- Paint or Finish requirements
- DVR (Design Verification Review) by a 3rd party
- Third Party Inspection/Approval

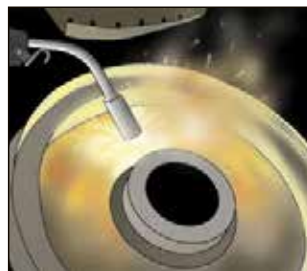
What Makes ForgeFab[®] Superior?



Each ForgeFab[®] sheave begins as driven, precision disc cut from proprietary chemistry alloy steel plate.



The steel disc is heated to forging temperature and its edge rotated against a system of staged rollers to forge the sheave rim and wire rope groove.



A precisely machined hub is arc welded to the forged disc. A variety of welding techniques is used, including: fillet, submerged arc, partial penetration and full penetration, depending on the application.



The result: A precision built ForgeFab[®] sheave, resistant to wear giving a long product life span as well as decreased wear on the wire rope.

Quick Reeve - Mobile Crane Block

Standard Features

- Quick release, zinc plated, rope retention pin meets OSHA requirements for rope retention. Can not be completely removed from block to avoid pin loss.
- Johnson J-Latch™ heavy duty, steel, lockable, spring loaded latch meets OSHA personnel lifting requirements.
- The Johnson J-Latch™ provides a fast hook deformation inspection point.
- Available tonnage capacities from 4.5 - 300 tonnes. Larger capacities available upon request.
- Quick Reeve™ upright design rests on its own hook for a stable base while reeving.
- No bulky, drop down, trap door to handle or damage.
- Wire rope end fitting will pass through block without removal from wire rope.



Shorty "J" Crane Blocks

Shorty "J" represents the broadest line of standard crane blocks in the industry. In all, we manufactures more than 1500 standard models of crane blocks not including options.

Standard Features

- 4.5 - 450 tonnes capacity
- 4:1 design factor
- 1 - 8 sheaves
- 250 - 760 mm sheave diameters
- Reeving guides for all models
- Bronze bushed and roller bearing sheaves
- Direct-channel sheave bearing lubrication through centre pin
- Flame hardened grooves on sheave sizes 400 - 760 mm diameters
- Dual action (swing/swivel) roller thrust bearing hooks
- Forged steel hooks, up to 30 tonnes
- Total disassembly capacity

Optional Features

- Forged steel hooks, 35 - 300 tonnes
- Cast alloy steel duplex hooks with bar latch 25 - 1750 tonnes
- Forged steel duplex hooks
- Anti-rotation locking devices, all models
- Swivel safety anchor shackles, all models
- Sheave shrouds, all models
- All models have detachable cast iron and steel cheek weights.
- Proof test and certification, radiographic, magnetic particle, and other non-destructive testing to specification by customer



6

Fixed Bail Construction and Marine Rigging Blocks

Beginning with 100 standard models, you are assured of selections that fit your every need. The lowest weight to capacity ratios, the quickest rigging and the easiest maintenance are a few additional benefits that prove once again that Johnson Blocks are consistent in quality and value.

Standard Features

- 10 to 135 tonnes capacity
- 4:1 design factor
- 1 to 6 sheaves
- Full coverage side plates and centre plates
- Top dead-end shackle
- Tapered roller bearings
- Oval pattern side plates

Optional Features

- Bronze bushings
- Diamond pattern side plates
- Fully galvanized for corrosion resistance
- High capacity, custom engineered blocks available upon request



Oilfield Tubing Blocks



Art.no.	Model No.	WLL (US Tons)	Sheave Diameter	Number of Sheaves	*Wire rope Size	Rod Hook Clevis Working Load Limit (US Tons)	Weight (Lbs)	Weight (Kg)
475667028QR1	TB 75T 20TTA	75	20"	3	7/8"	25	1685	764
475688028QR1	TB 75T 20TTB	75	20"	3	7/8"	25	2140	971
475671032QR1	TB 100T 24TTA	100	24"	3	1"	35	2252	1022
475689032QR1	TB 100T 24TTB	100	24"	3	1"	35	2950	1338
475672032QR1	TB 100Q 24TTA	100	24"	4	1"	35	2815	1277
475690032QR1	TB 100Q 24TTB	100	24"	4	1"	35	3514	1594
475731032QR1	TB 125T 24TTA	125	24"	3	1"	35	2252	1022
475732032QR1	TB 125T 24TTB	125	24"	3	1"	35	2950	1338
475729032QR1	TB 125Q 24TTA	125	24"	4	1"	35	2815	1277
475730032QR1	TB 125Q 24TTB	125	24"	4	1"	35	3514	1594
475674036QR1	TB 150T 30TTA	150	30"	3	1 1/8"	35	3560	1615
475691036QR1	TB 150T 30TTB	150	30"	3	1 1/8"	35	4702	2133
475675036QR1	TB 150Q 30TTA	150	30"	4	1 1/8"	35	3965	1799
475692036QR1	TB 150Q 30TTB	150	30"	4	1 1/8"	35	5106	2316
475757036QR1	TB175T 30TTA	175	30"	3	1 1/8"	35	3560	1615
475758036QR1	TB175T 30TTB	175	30"	3	1 1/8"	35	4702	2133
475759036QR1	TB175Q 30TTA	175	30"	4	1 1/8"	35	3965	1799
475760036QR1	TB175Q 30TTB	175	30"	4	1 1/8"	35	5106	2316

* Note: Additional Wire Rope Sizes Upon Request

- API 8C certified
- Concurrent hardening™ on sheave grooves
- Equipped with Timken tapered roller bearings
- Optional cheek weight kits available
- Non-spring loaded duplex hook
- Hook positioning locking device, 8 positions
- Includes rod hook clevis as standard
- Hook latches with self-retaining bolt

Tubing Block Rod Hook Clevis



Art.no.	WLL (US Tons)	Weight (Lbs)	Weight (Kg)	Tubing Block Capacity (US Tons)
475695	25	46	21	75
475696	35	71	32	100
475696	35	71	32	125
475697	35	111	50	150

- High capacity rating
- Life cycle tested
- API 8C PSL1 compliant

J-Latch Replacement Kit

Johnson's exclusive J-Latch is a uniquely engineered hook latch system providing outstanding flexibility and durability. Its heavy-duty design incorporates a steel beam that positively engages a special recessed area in the hook tip. The removable two-position pin allows the J-Latch to function either as a locked bar or as an automatic spring latch.

The J-Latch meets OSHA requirements and is standard equipment on Johnson crane blocks through 330 tons, all Johnson overhaul balls, and all swivels and snatch blocks with hooks.



Art.no.	J-Latch Kit no.	Crane Block WLL (US Tons)	Weight (Lbs)	Weight (Kg)	Hook Part Numbers
471782	JL3-5	3-5	0.2	0.09	2590 / 10390 / 10153
471784	JL10-15	10-15	0.4	0.18	2217 / 10392
471786	JL30	30	1.5	0.68	2635
471787	JL35-45	35-45	2.1	0.95	2633
471788	JL50-70	50-70	5.0	2.3	2636 / 2637
471789	JL75-110	75-110	7.3	3.3	2638 / 2639
471790	JL115-175	115-175	8.5	3.9	2600 / 2630
474206	JL200-300	200-300	35	15.9	1096 / 4012 / 11363

Note: J-Latches fit only Johnson hooks with a lock pin hole drilled through hook tip.