

Information Spare Part Kits

Introduction



The BROMMA spreaders consists of a huge number of different parts. In developing the handling of spare parts and ensuring shortest possible downtime, BROMMA has released 14 spare part kits. These kits consists of parts that by statistic are often replaced and parts that should be replaced together. BROMMA intentions is to release some more kits during year 2005.

Why spare part kits?

- Easier to order (Only one article No.)
- Faster deliveries. (prepacked kits at Bromma stores).
- Increased quality. (Includes the parts that should be replaced together).
- Easy to replace. (Includes a detailed assembly instruction).

Available Spare Part Kits:

*Blockading pin kit
ISO floating
1000987*

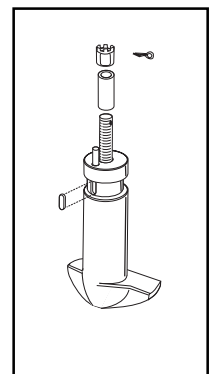
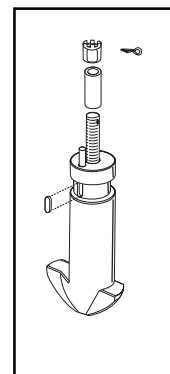
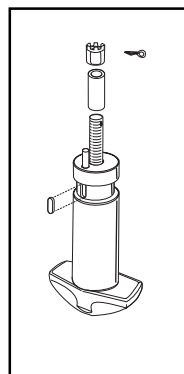
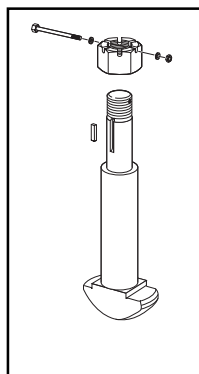
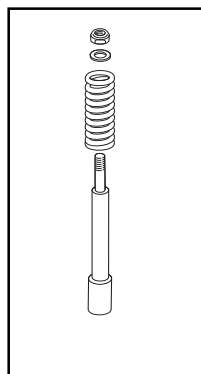
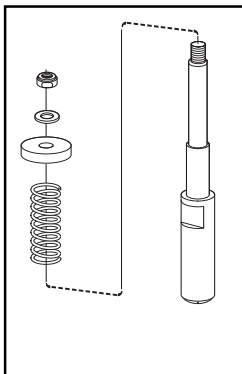
*Blockading pin kit
ISO/Uni fixed
1000997*

*Twistlock pin kit
ISO floating
1001341*

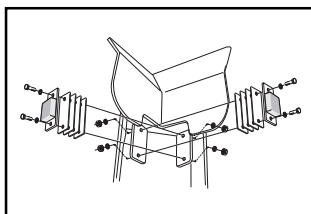
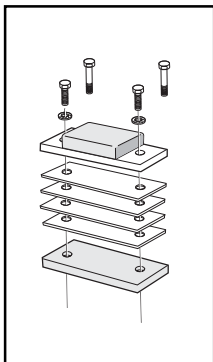
*Twistlock pin kit
ISO fixed
1000995*

*Twistlock pin kit
Uni fixed type 1
1000994*

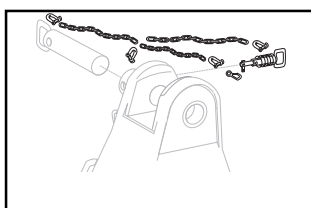
*Twistlock pin kit
Uni fixed type 1
1000993*



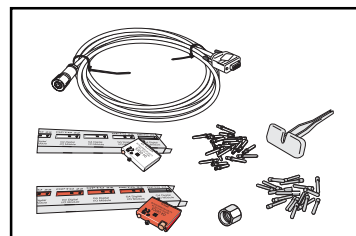
*Rubber buffer kit
1000991*



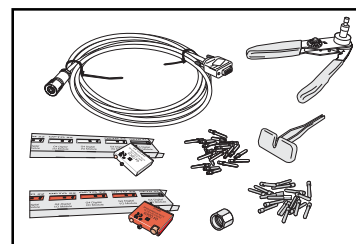
*Buffer kit
Flipper Arms
1000996*



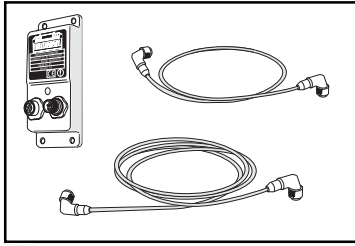
*Locking shaft kit
EH5/EH170
1000992*



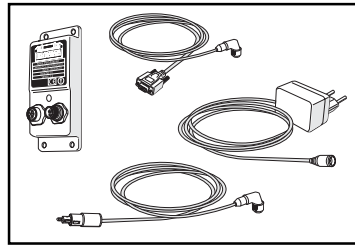
*Service kit
for SCS²
1000990*



*Start up kit
for SCS²
1000989*

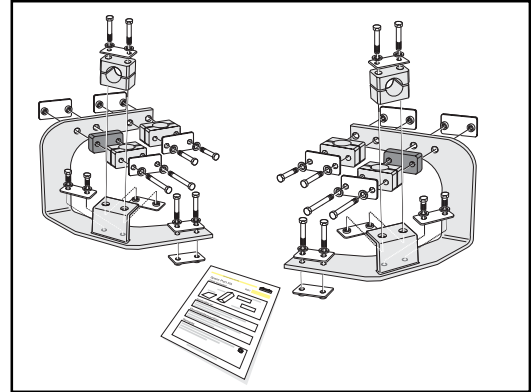


Bluetooth® Service kit
1002115



Bluetooth® Computer kit
1002116

The *Bluetooth®* word mark and logos are owned by the *Bluetooth SIG, Inc.* and any use of such marks by Bromma Concuip is under license. Other trademarks and trade names are those of their respective owners. Bromma Concuip is an adopter member of the *Bluetooth® SIG* interest group.



Sensor Assy Kit End Beam 1002860

Planned Spare part kits

During 2005 BROMMA After Sales Department is planning to release spare part kits for:

- Set of leads for proximity switches
- Upgrade / change from Char Lynn to TRW flipper motors
- Hydraulic couplings
- Cable and hose clamps
- Tower end stops

If you have any other ideas or wishes in packaging Bromma spares into kits, let us know.

How to order Bromma Spare part kits

While we welcome your spare parts orders in any form, Bromma also offers an online spare parts ordering service at www.bromma.com. Customers placing spare parts orders at www.bromma.com will receive a 3% discount on all Bromma spare parts orders placed online from here forward.

Just enter www.bromma.com and apply for your personal user ID and password. Then you can log onto our website at any time and search our parts database, check spare parts prices, enter parts orders, and track shipments.

How to get user ID and Password

To be able to log in to the Bromma e-commerce site you must be a registered user. To become a registered user you have to fill in the Application Form on the Bromma website. After a few days you will receive a User ID and a password by e-mail.